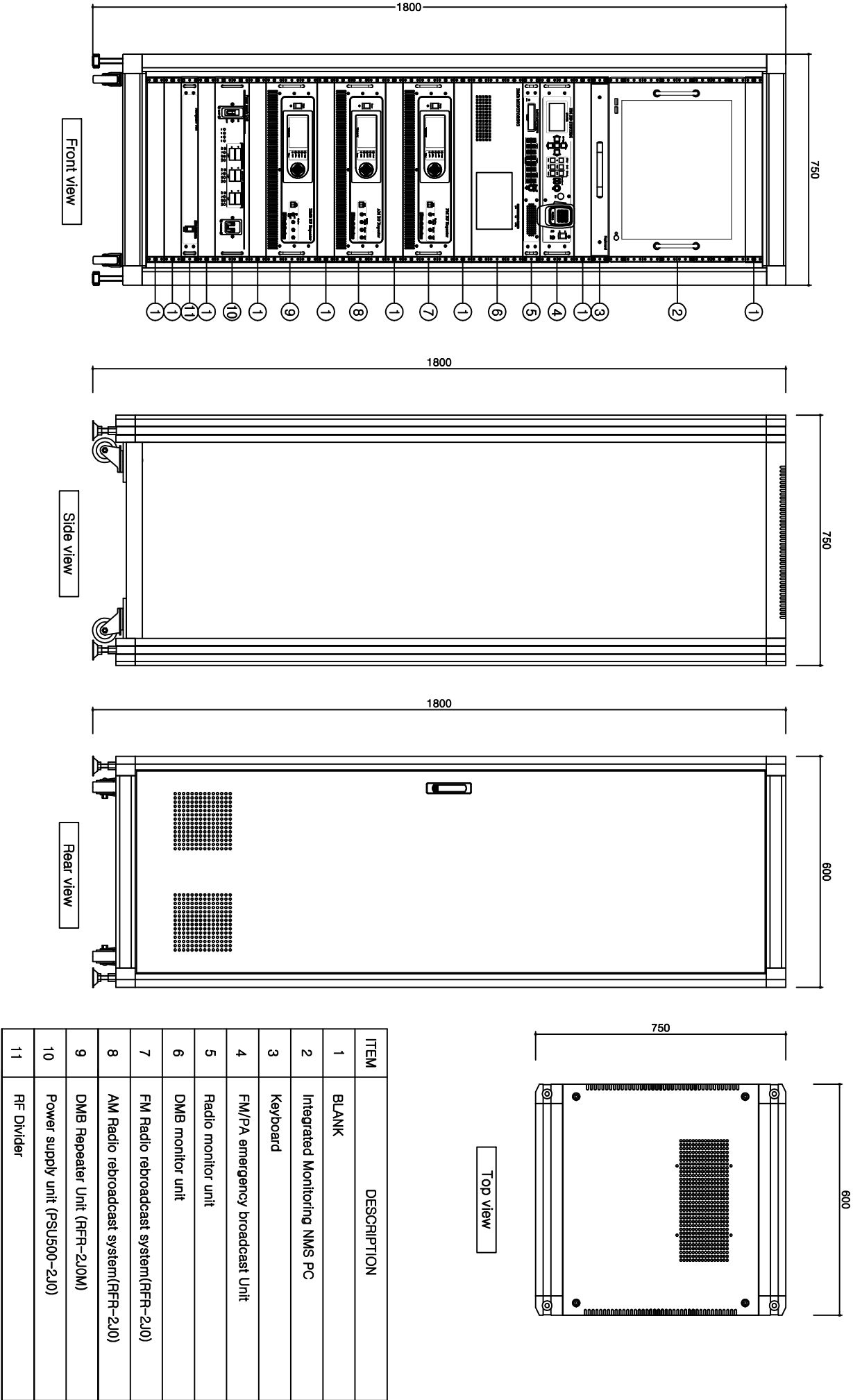
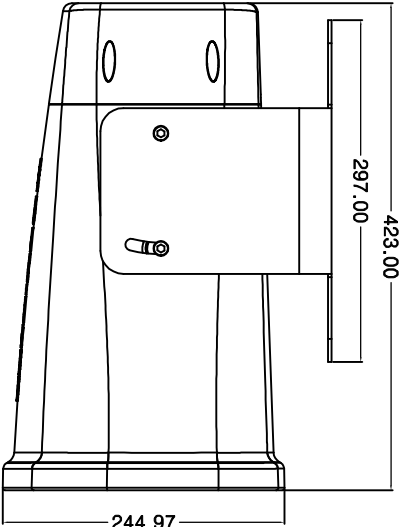
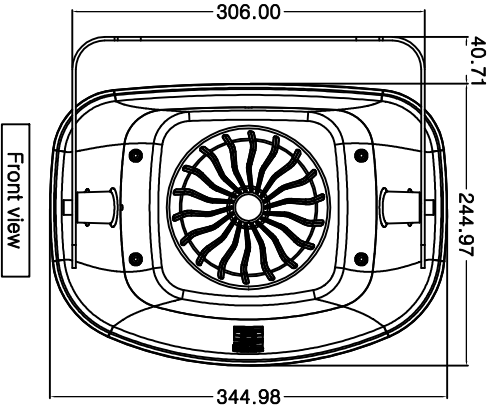
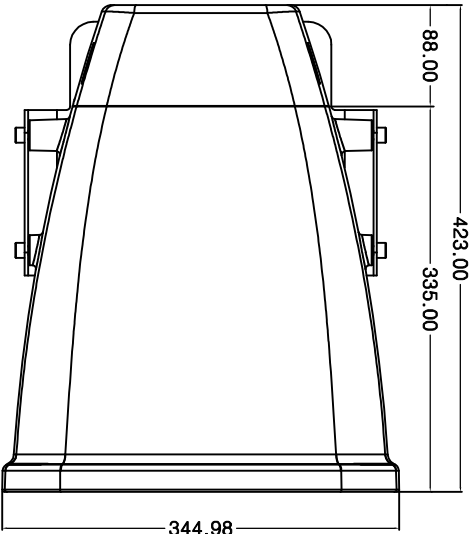


Tunnel radio rebroadcast Main system Detail



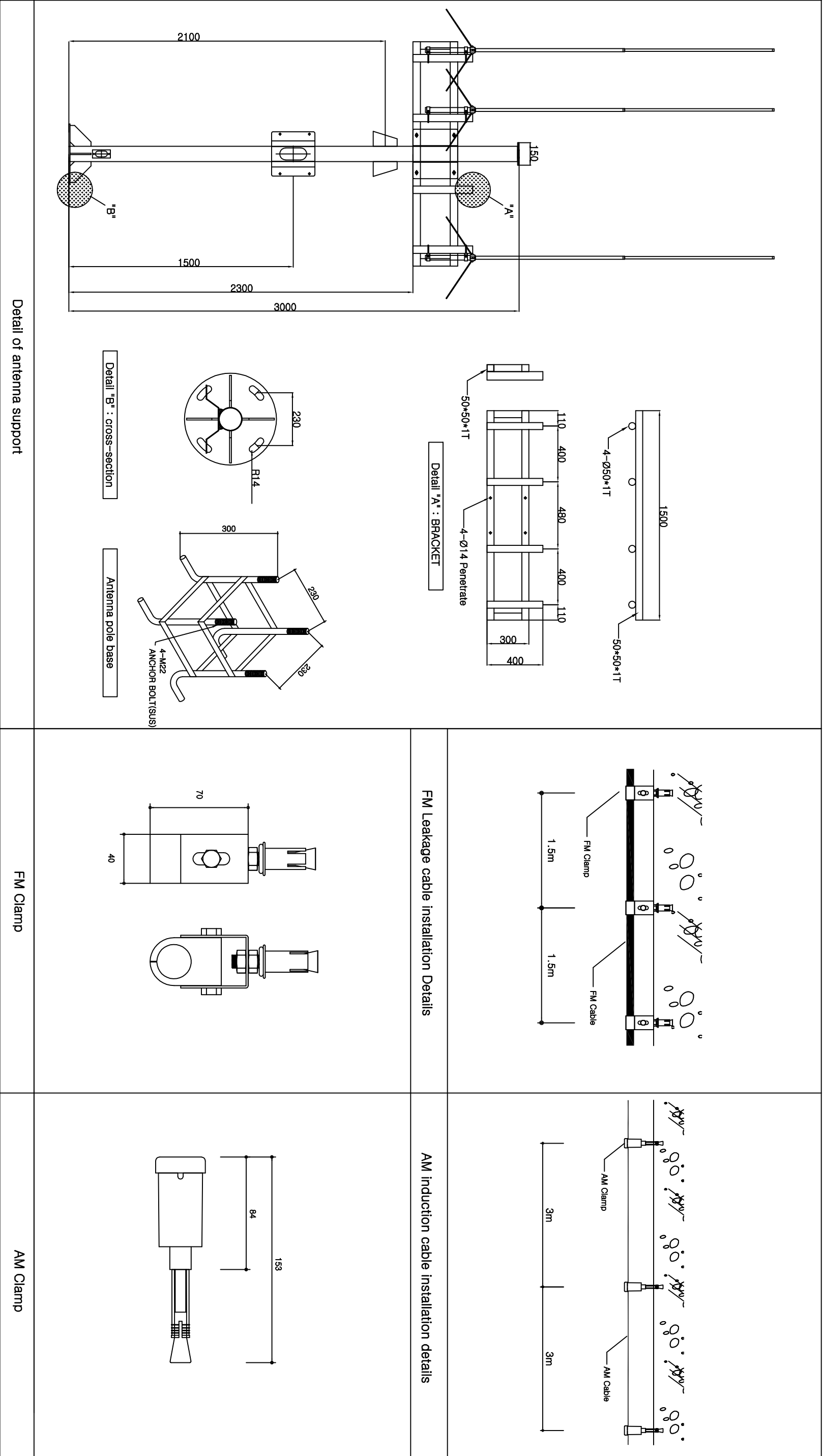
Main system Rack detail



Emergency broadcast speaker details

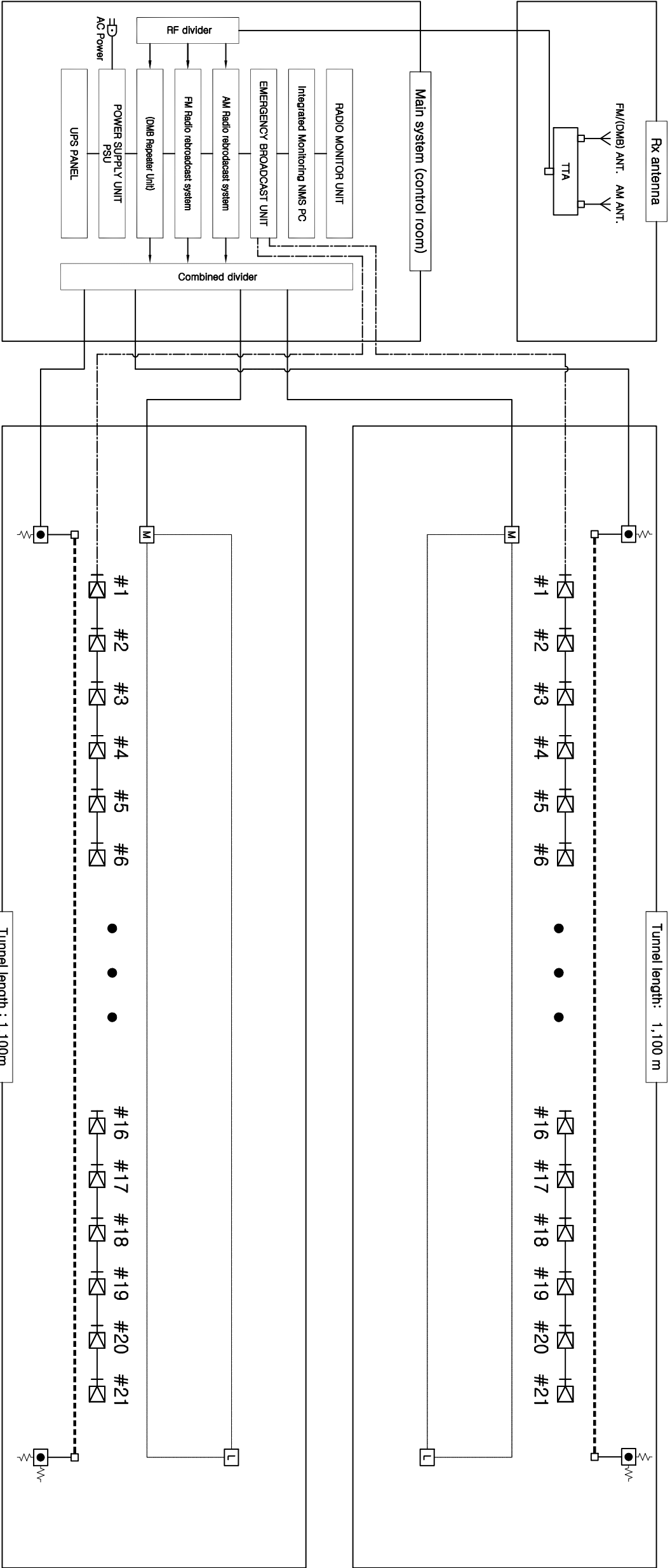
CLIENT	TASK NAME	Drawing name	Drafter : System WRF-302(WorldRF Co.,Ltd)		Checker	Date	Scale	Drawing number
	Tunnel radio rebroadcast system(WRF-302)	Tunnel radio rebroadcast Main system Detail			Reviewer	2020. .	S=NONE	ET-004
					Writer			

Tunnel radio rebroadcast device installation detail



CLIENT	TASK NAME	Drawing name	Drafter : System WRF-302(WorldPF Co.,Ltd)	Checker		Date	Scale	Drawing number
	Tunnel radio rebroadcast system(WRF-302)	Tunnel radio rebroadcast device installation detail		Reviewer		2020. .	S=NONE	ET-005
				Writer				

Tunnel radio rebroadcast system diagram



Legend

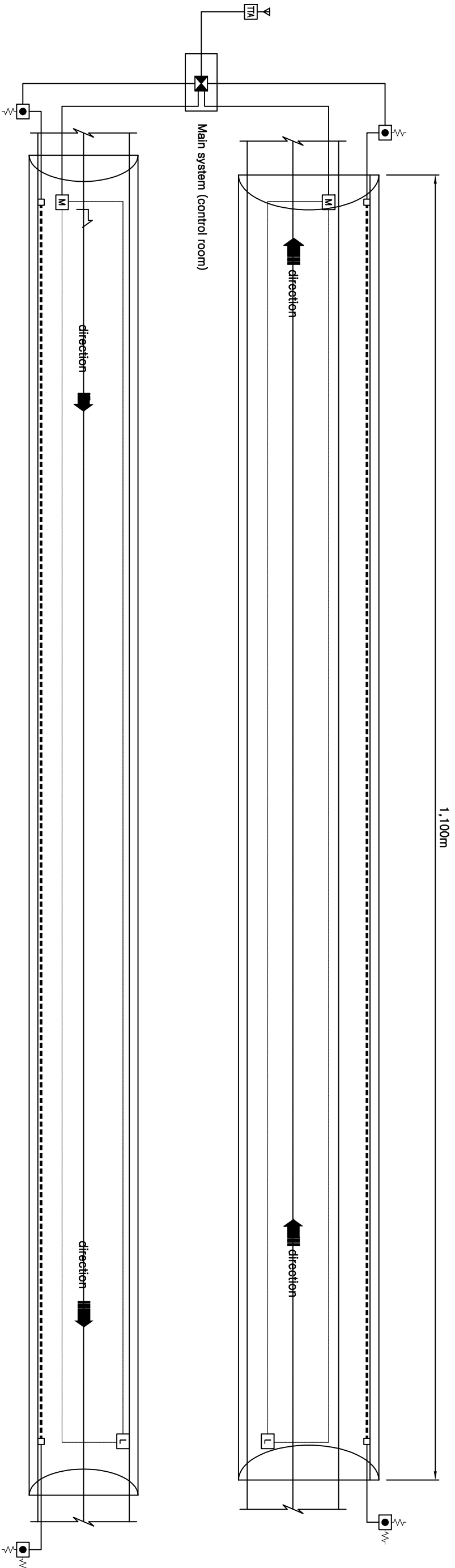
SYMBOL	DESCRIPTION	REMARK
Y	AM/FM/TDMB ANT	
TTA	TTA(Low Noise Amplifier)	
Radio rebroadcast system Main Equipment		
Fire radio access terminal box		
AM Impedance matching(50:800)		
AM dummy load(800Ω)		
FM dummy load(50Ω)		
Connector		

NOTE

1. The wiring are as follows.
- Leakage coaxial cable(7/8"~) flame retardant
 - AM transmission Induction cable
 - RF coaxial cable
 - Optical cable
2. The fixed installation interval of the leaky coaxial cable is 1.5m.
3. The fixed spacing of AM transmission induction cables is 3.0m.
4. The installation interval of the emergency speaker inside the tunnel is 50m.
5. The installation location of the receiving antenna is determined after field inspection.

CLIENT	TASK NAME	Drawing name	Drafter : System WRF-302(WorldRF Co.,Ltd)	Checker	Date	Scale	Drawing number
	Tunnel radio rebroadcast system(WRF-302)	Tunnel radio rebroadcast system diagram		Reviewer	2020. .	S=NONE	ET-001
				Writer			

Tunnel radio rebroadcast system floor plan-1



Legend

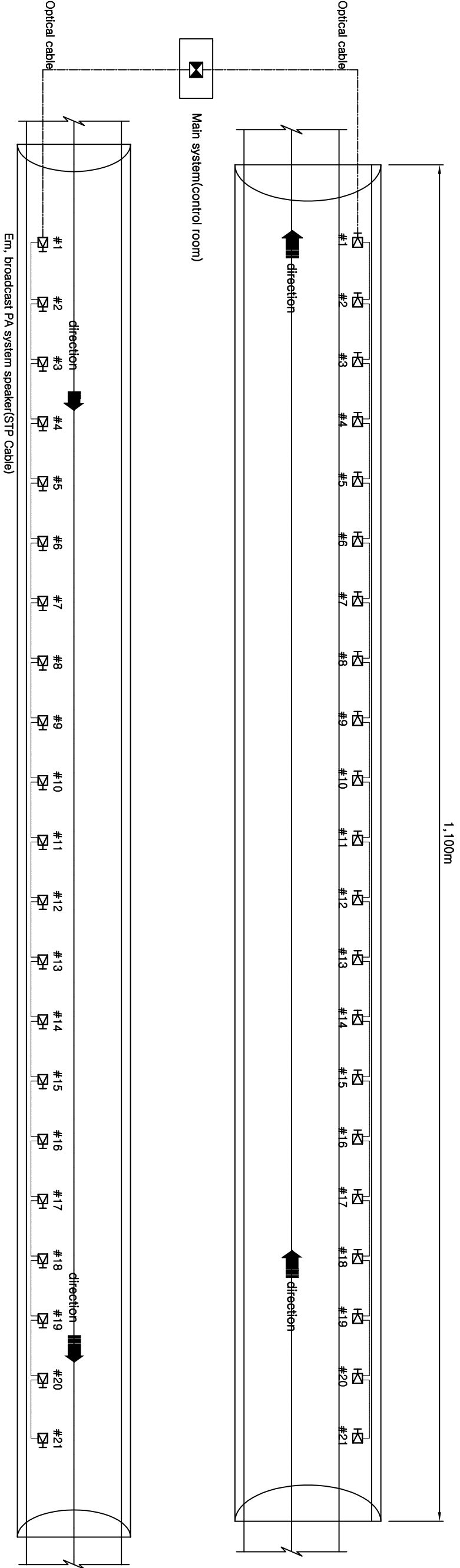
SYMBOL	DESCRIPTION	REMARK
Y	AM/FM/TDMB ANT	
TTA	TTA(Low Noise Amplifier)	
direction	Radio rebroadcast system Main Equipment	
direction	Fire radio access terminal box	
M	AM Impedance matching(50:800)	
L	AM dummy load(800Ω)	
-/-	FM dummy load(50Ω)	
□	Connector	

NOTE

- The wiring are as follows.
 - Leakage coaxial cable(7/8"~) flame retardant
 - AM transmission Induction cable
 - RF coaxial cable
 - Optical cable
- The fixed installation interval of the leaky coaxial cable is 1.5m.
- The fixed spacing of AM transmission induction cables is 3.0m.
- The installation interval of the emergency speaker inside the tunnel is 50m.
- The installation location of the receiving antenna is determined after field inspection.

CLIENT	TASK NAME	Drawing name	Drafter : System WRF-302(WorldRF Co.,Ltd)	Checker	Date	Scale	Drawing number
	Tunnel radio rebroadcast system(WRF-302)	Tunnel radio rebroadcast system floor plan-1		Reviewer	2020. .	S=NONE	ET-002
				Writer			

Tunnel radio rebroadcast system floor plan-2



Legend

SYMBOL	DESCRIPTION	REMARK
Y	AM/FM/TDMB ANT	
TTA	TTA(Low Noise Amplifier)	
☒	Radio rebroadcast system Main Equipment	
●	Fire radio access terminal box	
M	AM Impedance matching(50:800)	
L	AM dummy load(800Ω)	
~/-	FM dummy load(50Ω)	
□	Connector	

NOTE

1. The wiring are as follows.
- Leakage coaxial cable(7/8~) flame retardant

----- AM transmission Induction cable

----- RF coaxial cable

----- Optical cable
2. The fixed installation interval of the leaky coaxial cable is 1.5m.
3. The fixed spacing of AM transmission induction cables is 3.0m.
4. The installation interval of the emergency speaker inside the tunnel is 50m.
5. The installation location of the receiving antenna is determined after field inspection.

CLIENT	TASK NAME	Drawing name	Drafter : System WRF-302(WorldRF Co.,Ltd)		Checker	Date	Scale	Drawing number
	Tunnel radio rebroadcast system(WRF-302)	Tunnel radio rebroadcasting system floor plan-2			Reviewer	2020. .	S=NONE	ET-003
					Writer			