

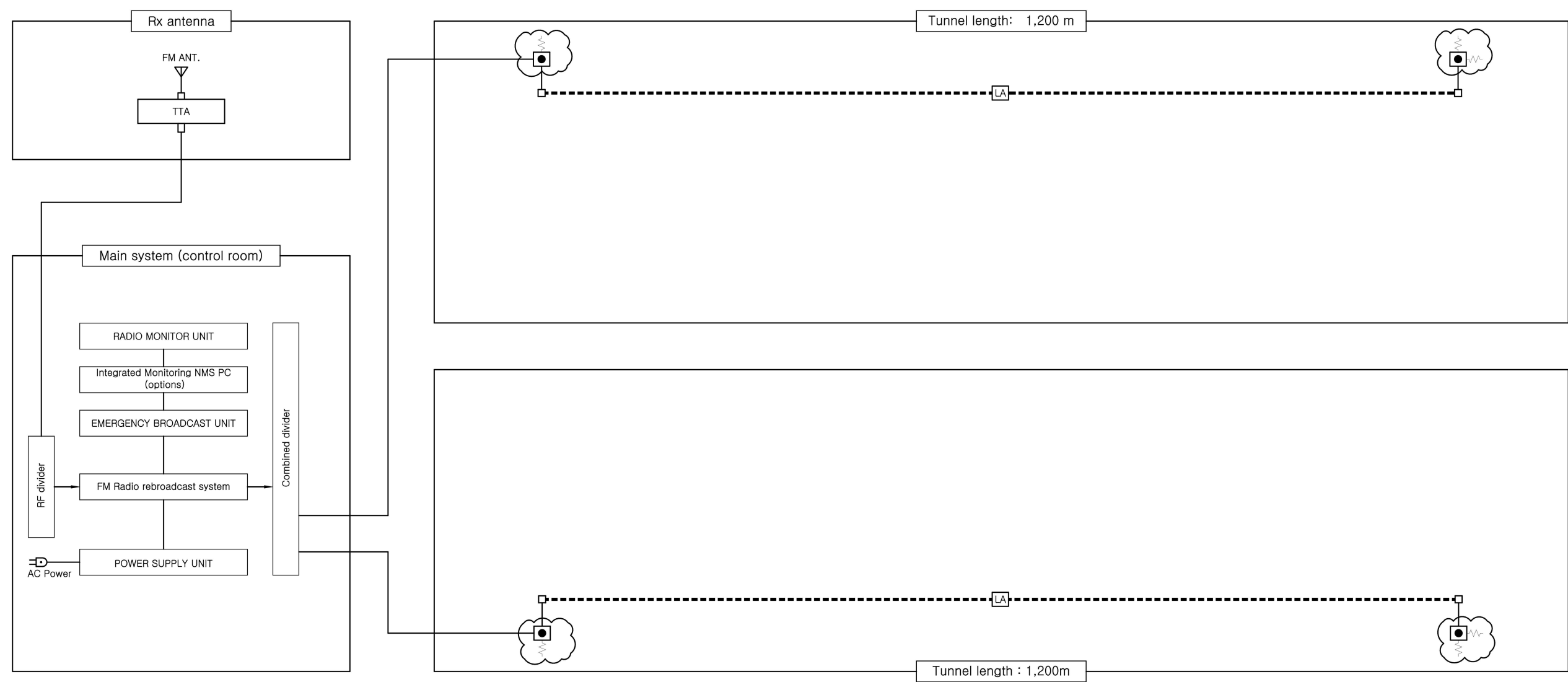
# Tunnel radio rebroadcast system design drawing

System type : WRF-202(FM) 1,200m

Drawing list table

Drawing number	Drawing name	Scale (A1)	Scale (A3)
ET-000	Drawing list table	NONE	NONE
ET-001	Tunnel radio rebroadcast system diagram	NONE	NONE
ET-002	Tunnel radio rebroadcast system floor plan	NONE	NONE
ET-003	Tunnel radio rebroadcast main System detail	NONE	NONE
ET-004	Tunnel radio rebroadcast device instillation detail	NONE	NONE

# Tunnel radio rebroadcast system diagram



## Legend

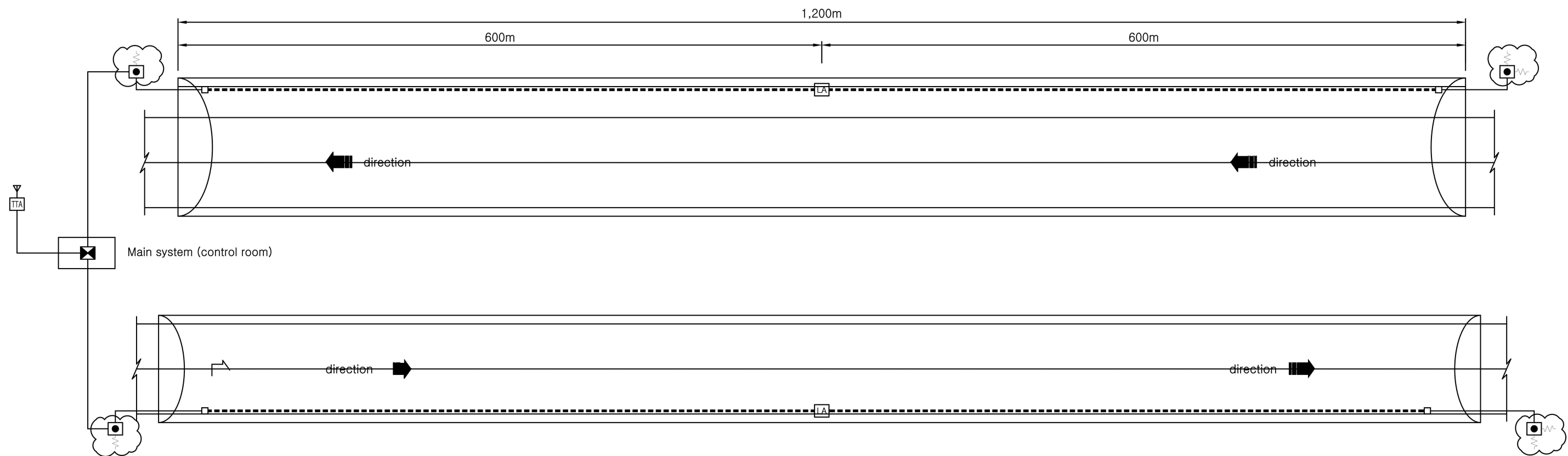
SYMBOL	DESCRIPTION	REMARK
	FM ANT	
	TTA(Low Noise Amplifier)	
	Radio rebroadcast system Main Equipment	
	Fire radio access terminal box	
	FM LINE AMPLIFIER	
	FM dummy load(50Ω)	
	Connector	

## NOTE

- The wiring are as follows.
  - Leakage coaxial cable(7/8"~ ) flame retardant
  - RF coaxial cable
- The fixed installation interval of the leaky coaxial cable is 1.5m.
- The installation location of the receiving antenna is determined after field inspection.

CLIENT	TASK NAME	Drawing name	Drafter : System WRF-202(WorldRF Co.,Ltd)	Checker	Date	Scale	Drawing number
	Tunnel radio rebroadcast system(WRF-202)	Tunnel radio rebroadcast system diagram		Reviewer	2022. 11.	S=NONE	ET-001
				Writer			

# Tunnel radio rebroadcast system floor plan



## Legend

SYMBOL	DESCRIPTION	REMARK
	FM ANT	
	TTA(Low Noise Amplifier)	
	Radio rebroadcast system Main Equipment	
	Fire radio access terminal box	
	FM LINE AMPLIFIER	
	FM dummy load(50Ω)	
	Connector	

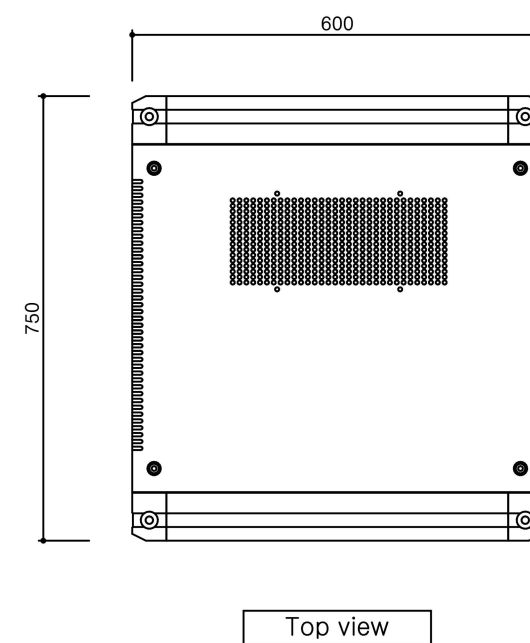
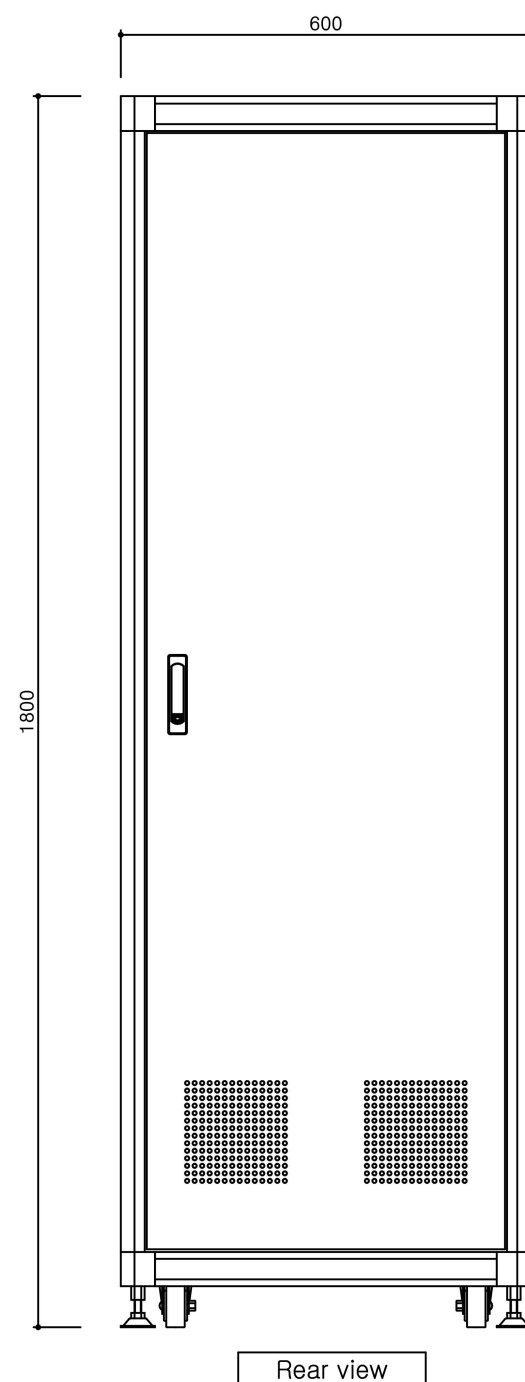
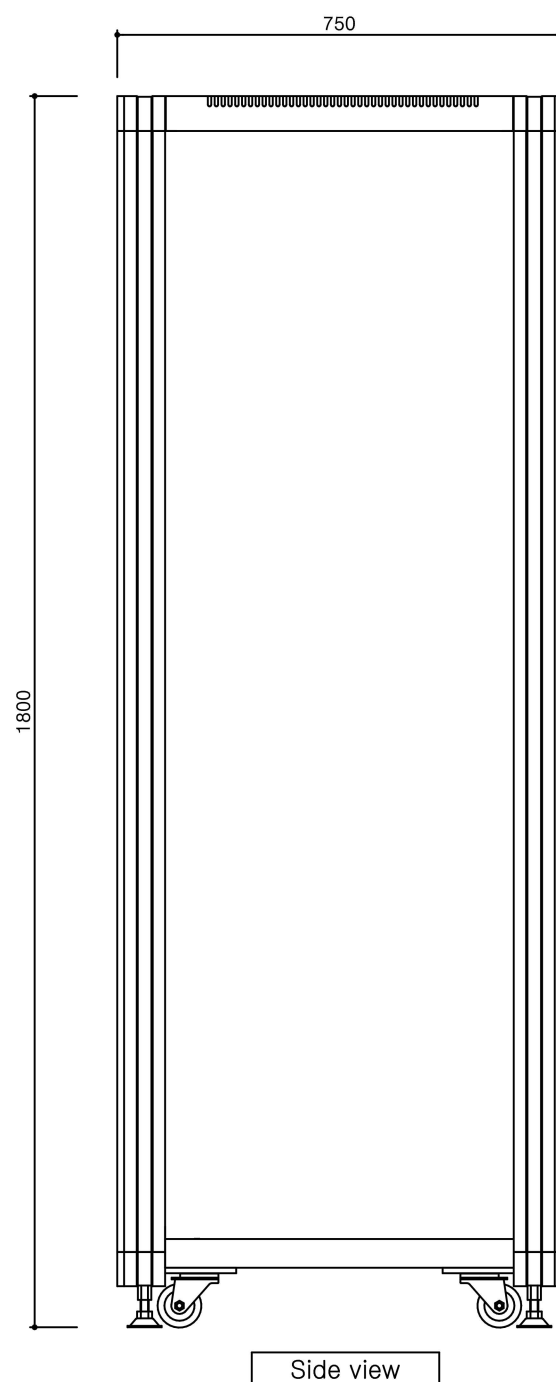
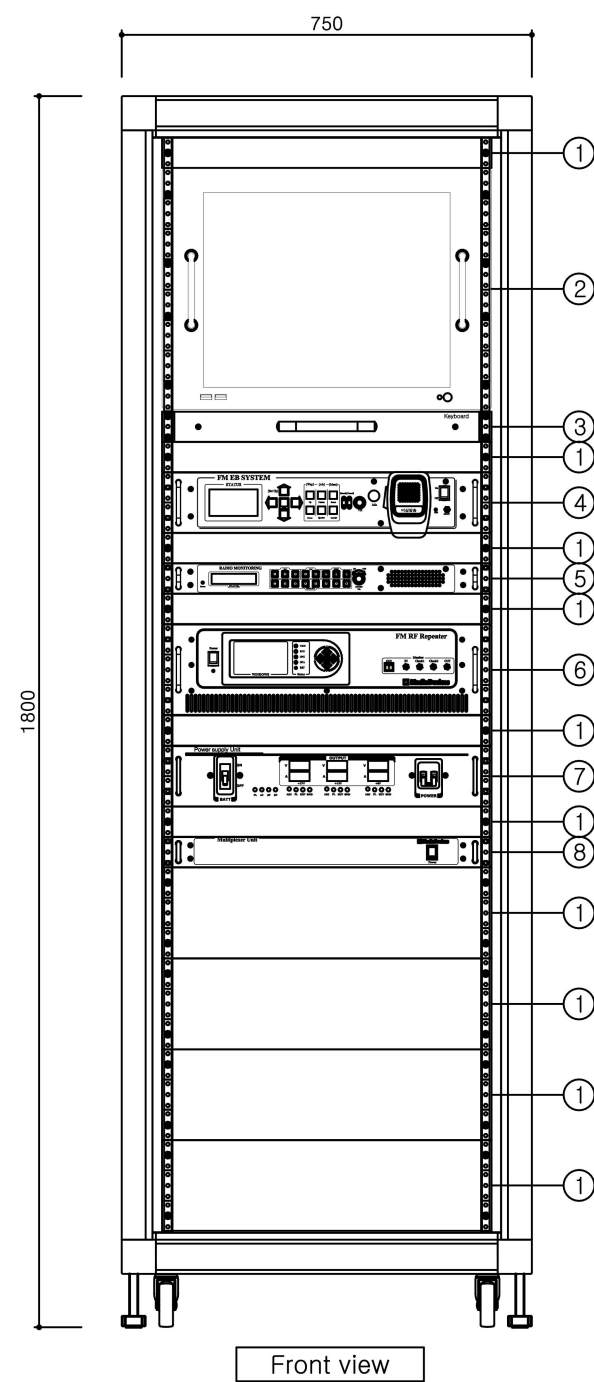
## NOTE

- The wiring are as follows.
  - Leakage coaxial cable(7/8"~ ) flame retardant
  - RF coaxial cable
- The fixed installation interval of the leaky coaxial cable is 1.5m.
- The installation location of the receiving antenna is determined after field inspection.

CLIENT	TASK NAME Tunnel radio rebroadcast system(WRF-202)	Drawing name Tunnel radio rebroadcast system floor plan	Drafter : System WRF-202(WorldRF Co.,Ltd)	Checker		Date 2022. 11.	Scale S=NONE	Drawing number ET-002
				Reviewer				
				Writer				



Tunnel radio rebroadcast Main system Detail



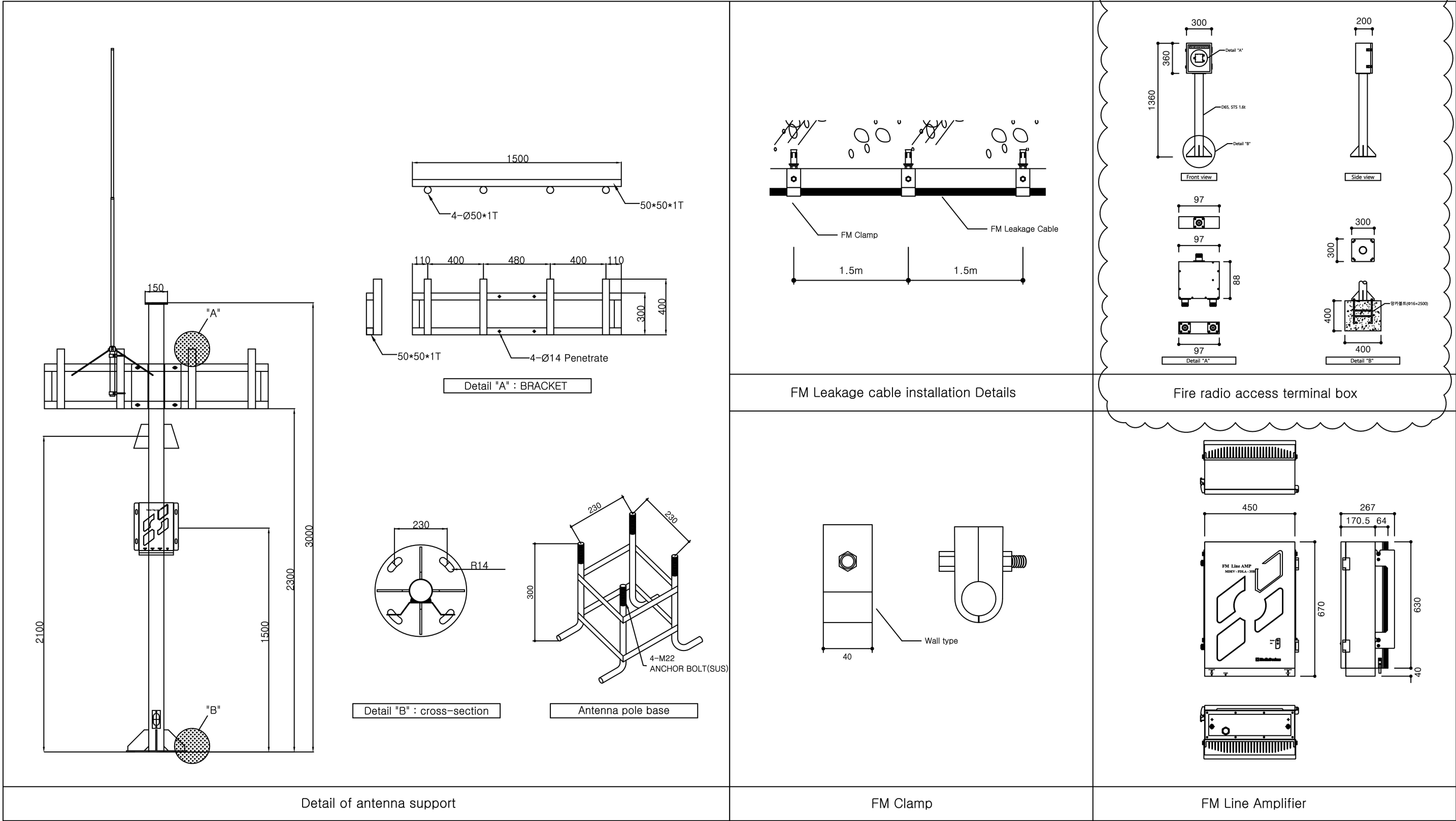
ITEM	DESCRIPTION
1	BLANK
2	Integrated Monitoring NMS PC (options)
3	Keyboard (options)
4	FM emergency broadcast Unit
5	Radio monitor unit
6	FM Radio rebroadcast system
7	Power supply unit
8	RF Divider

Main system Rack detail

CLIENT	TASK NAME	Drawing name	Drafter : System WRF-202(WorldRF Co.,Ltd)	Checker		Date	Scale	Drawing number
	Tunnel radio rebroadcast system(WRF-202)	Tunnel radio rebroadcast Main system Detail		Reviewer		2022. 11.	S=NONE	ET-003
				Writer				

# Tunnel radio rebroadcast device installation detail

Fire radio access terminal box  
(Options can be changed (Korean standard 450MHZ))



CLIENT	TASK NAME	Drawing name	Drafter : System WRF-202(WorldRF Co.,Ltd)	Checker	Date	Scale	Drawing number
	Tunnel radio rebroadcast system(WRF-202)	Tunnel radio rebroadcast device installation detail		Reviewer	2022. 11.	S=NONE	ET-004
				Writer			