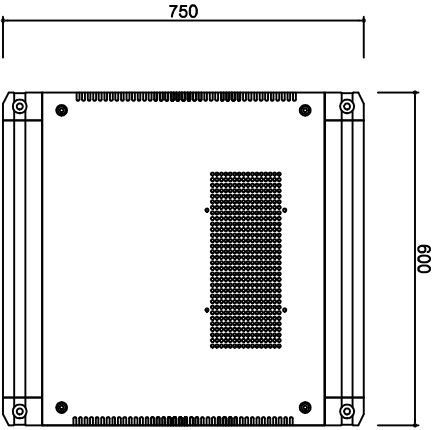
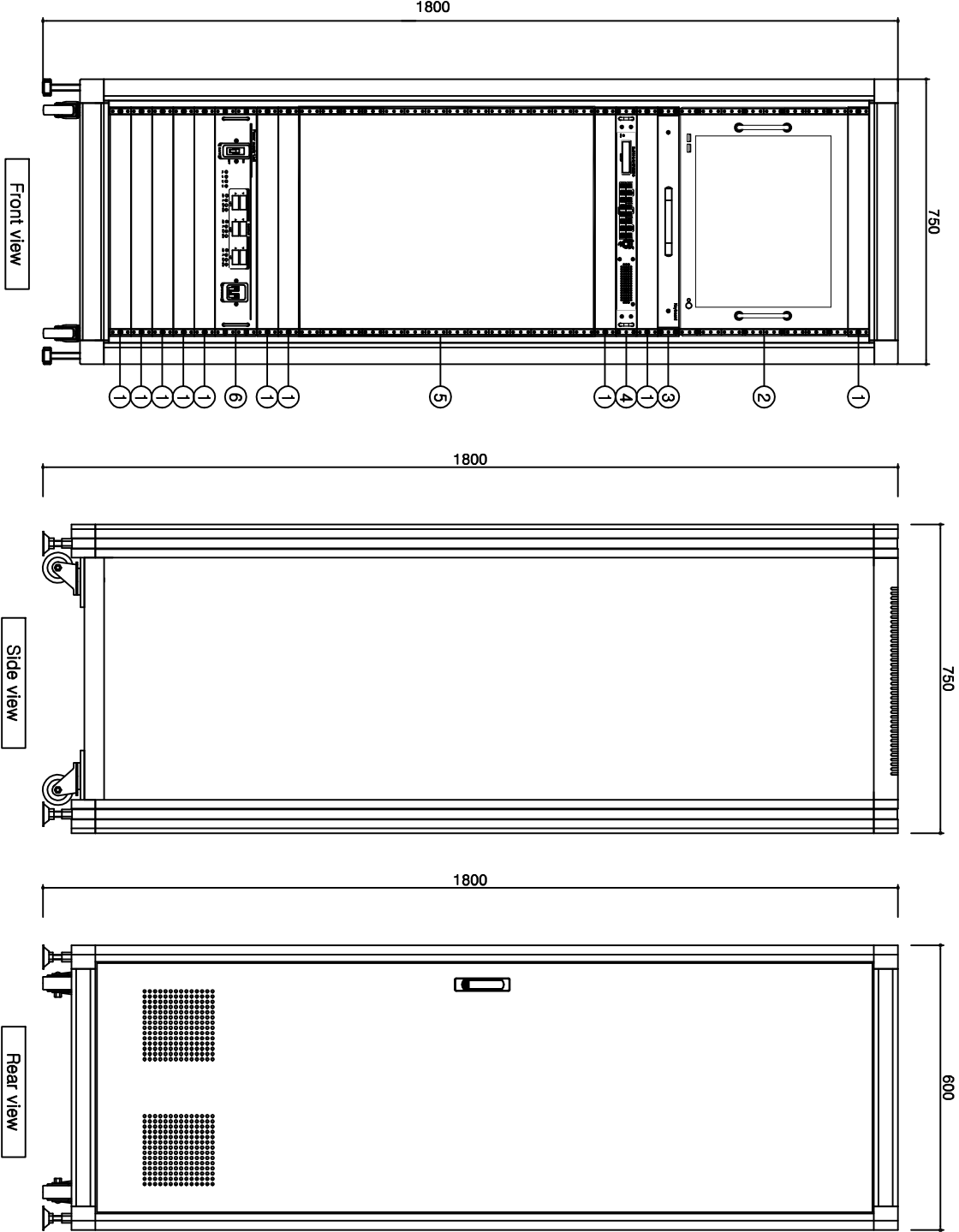


Tunnel Radio Rebroadcast Main System Detail

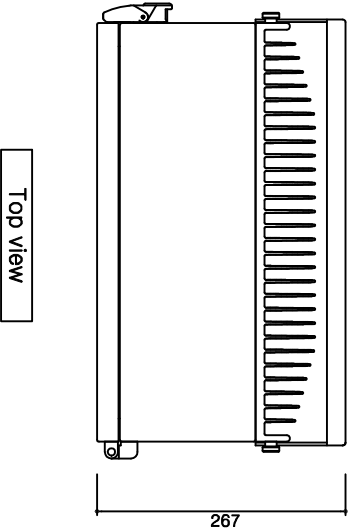


Top view

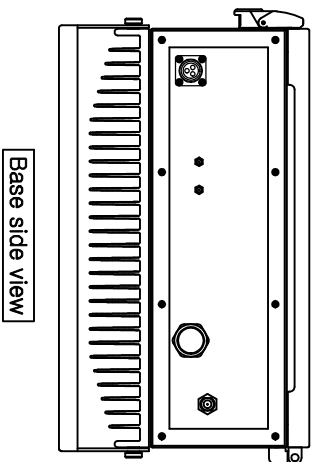
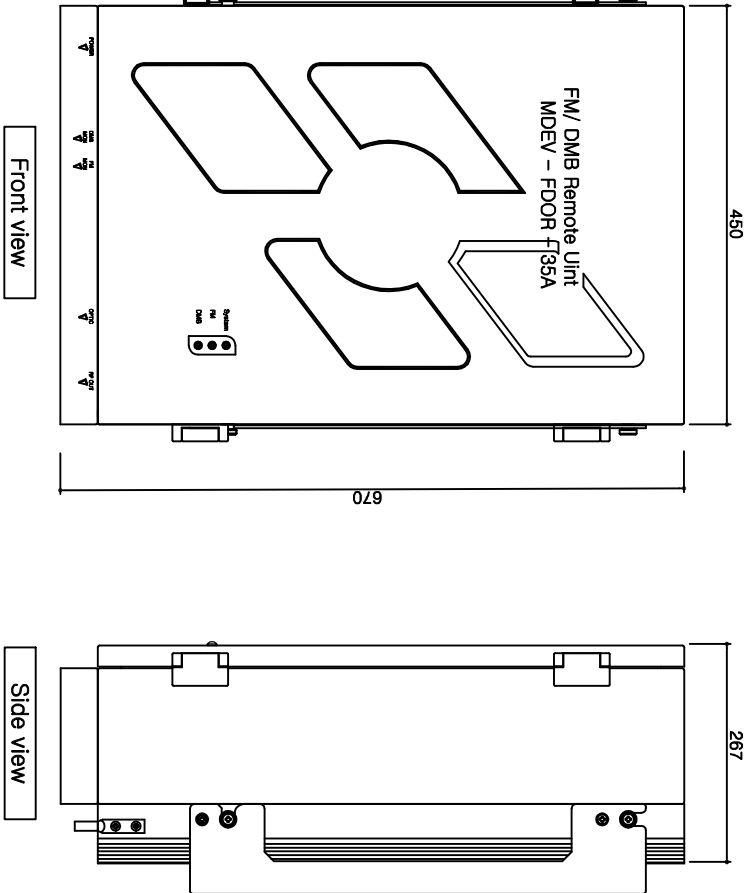
ITEM	DESCRIPTION
1	BLANK
2	Integrated Monitoring NMS PC
3	Keyboard
4	Radio monitor unit(FRM-2J0)
5	Shelf type Main unit(AM/FM/DMB/EM PA)
6	Power supply Unit(PSU500-2J0)



Main system Rack detail



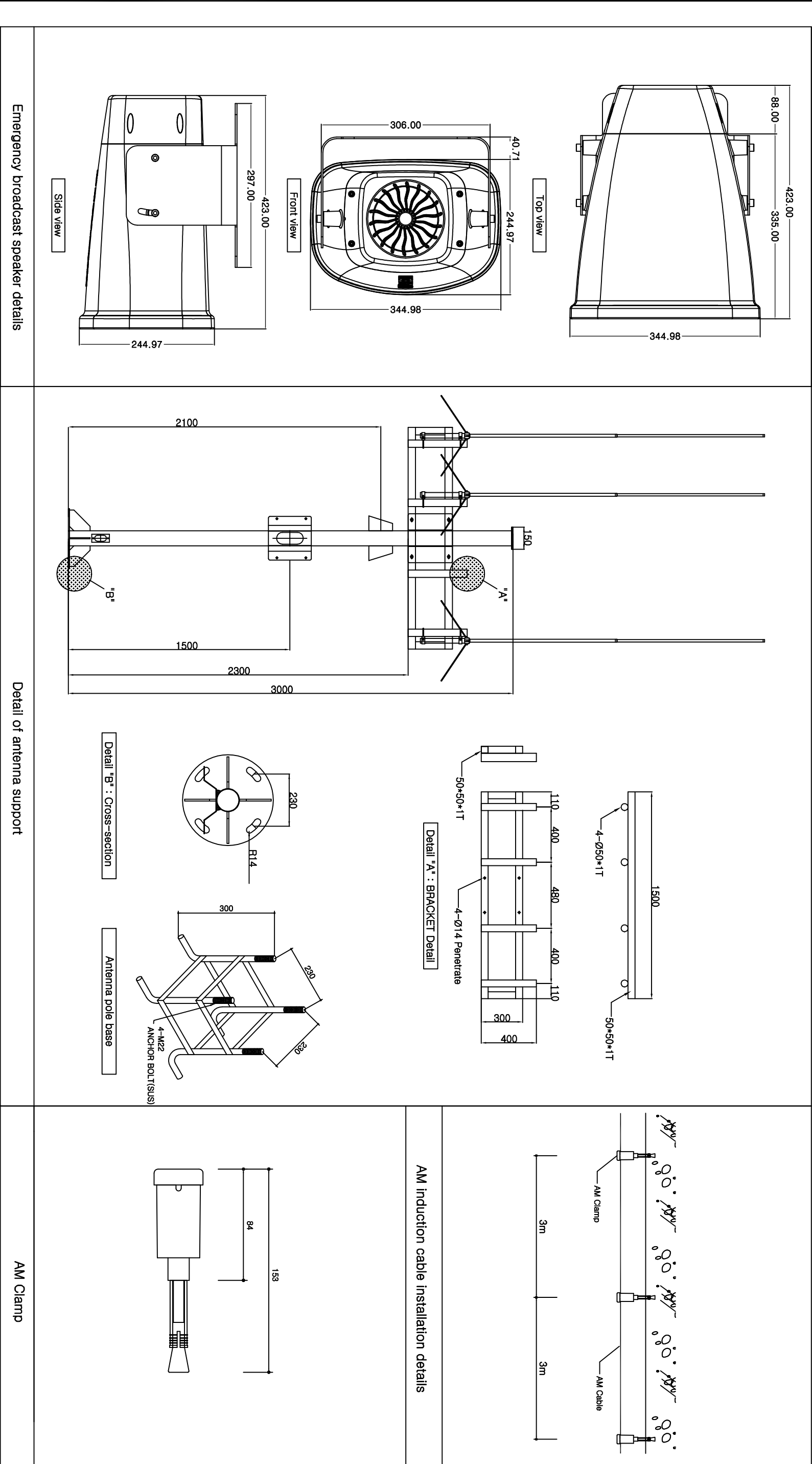
Top view



Optical Remote Repeater

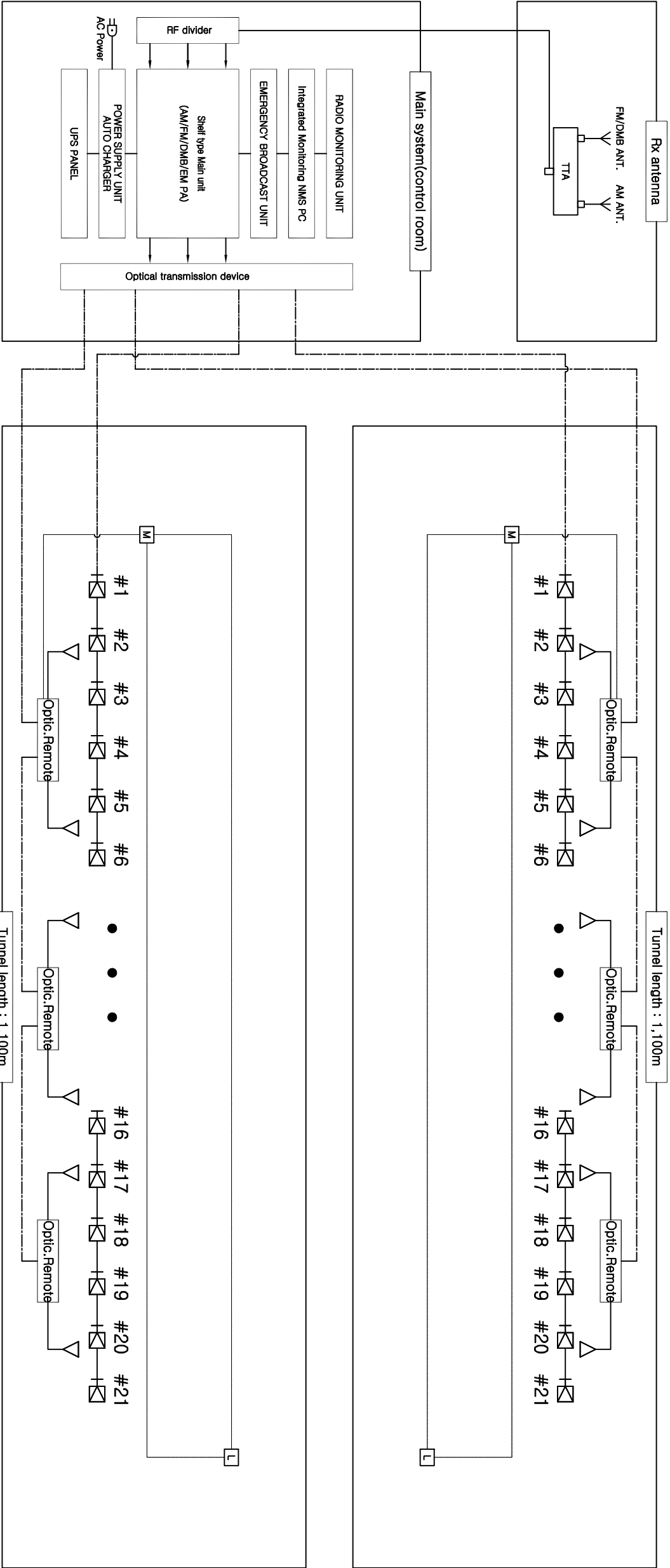
Client	Task name	Drawing name	Drafter : System WRF-402(World RF Co.,Ltd)	Checker	Reviewer	Date	Scale	Drawing number
	Tunnel radio rebroadcast system(WRF-402)	Tunnel Radio Rebroadcast Main System Detail				2020.	S=NONE	ET-004

Tunnel radio rebroadcast device installation detail



Client	Task name		Drawing name		Drafter : System WRF-402(World RF Co.,Ltd)		Checker		Date	Scale	Drawing number
	Tunnel radio rebroadcast system(WRF-402)		Tunnel radio rebroadcast device installation detail				Reviewer		2020.	S=NONE	ET-005
							Writer				

Tunnel radio rebroadcast system diagram



Legend

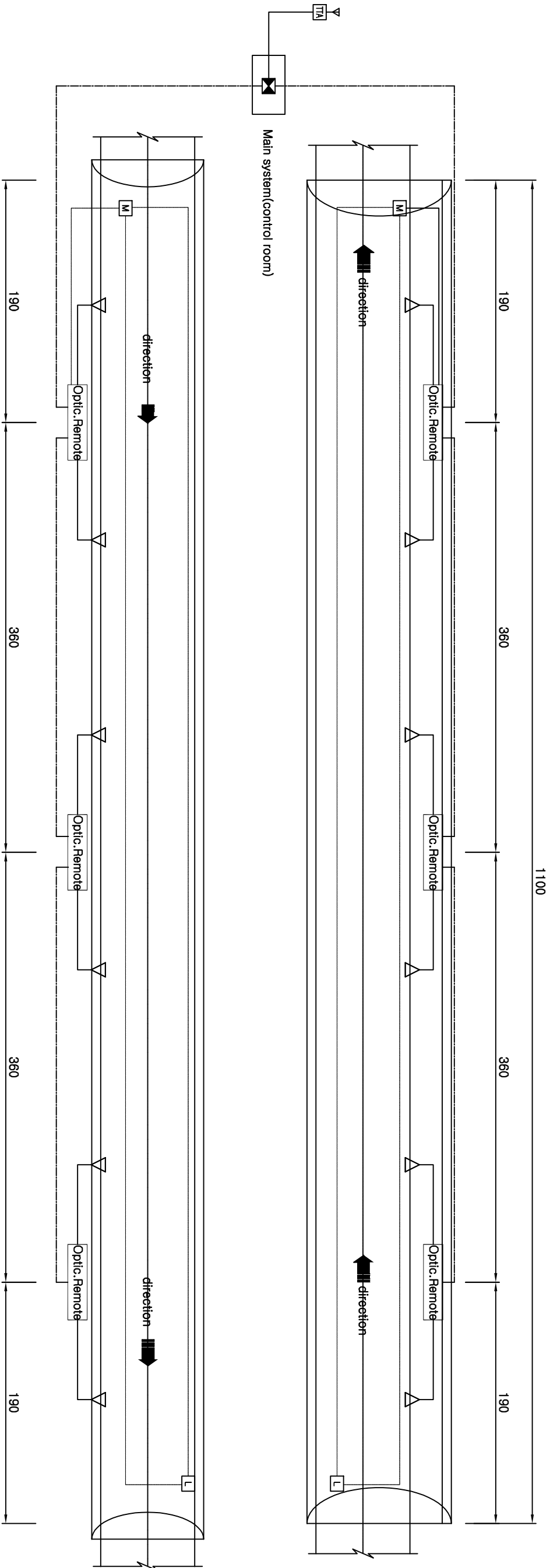
SYMBOL	DESCRIPTION	REMARK
Y	AM/FM/DMB ANT	
TTA	TTA(Low Noise Amplifier)	
■	Tunnel radio rebroadcast system Main equipment	
h	Emergency broadcast PA system speaker	
M	AM Impedance Matching	
L	AM Dummy Load	

NOTE

1. The wiring are as follows.
- AM transmission Induction cable
  - RF coaxial cable
  - Optical cable
2. The fixed spacing of AM transmission Induction cables is 3.0 m.
3. The installation interval of the emergency speaker inside the tunnel is 50m.
4. The installation location of the receiving antenna is determined after field inspection.

Client	Task name	Drawing name	Drafter : System WRF-402(World RF Co.,Ltd)	Checker	Reviewer	Date	Scale	Drawing number
	Tunnel radio rebroadcast system(WRF-402)	Tunnel radio rebroadcast system diagram			Writer	2020.	S=NONE	ET-001

# Tunnel radio rebroadcast system floor plan-1



## Legend

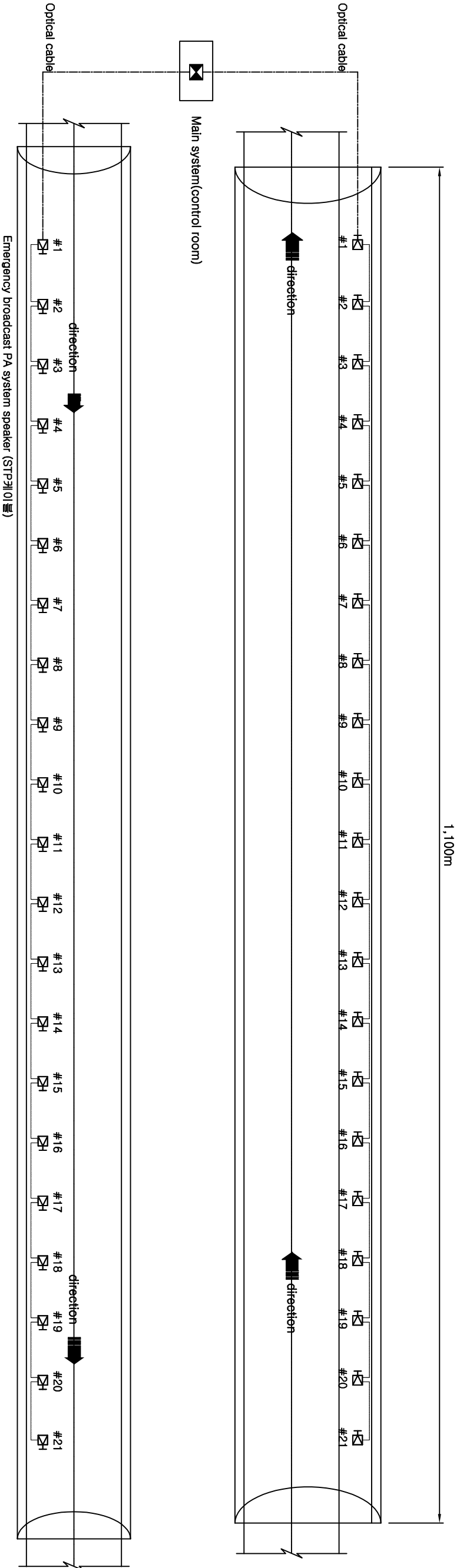
SYMBOL	DESCRIPTION	REMARK
Y	AM/FM/DWB ANT	
TTA	TTA(Low Noise Amplifier)	
■	Tunnel radio rebroadcast system Main equipment	
H	Emergency broadcast PA system speaker	
M	AM Impedance Matching	
L	AM Dummy Load	

## NOTE

- The wiring are as follows.
  - AM transmission Induction cable
  - RF coaxial cable
  - Optical cable
- The fixed spacing of AM transmission Induction cables is 3.0 m.
- The installation interval of the emergency speaker inside the tunnel is 50m.
- The installation location of the receiving antenna is determined after field inspection.

Client	Task name	Drawing name	Drafter : System WRF-402(World RF Co.,Ltd)	Checker	Reviewer	Date	Scale	Drawing number
	Tunnel radio rebroadcast system(WRF-402)	Tunnel radio rebroadcast system floor plan-1				2020.	S=NONE	ET-002

# Tunnel radio rebroadcast system floor plan-2



## Legend

SYMBOL	DESCRIPTION	REMARK
Y	AM/FM/DMB ANT	
TTA	TTA(Low Noise Amplifier)	
■	Tunnel radio rebroadcast system Main equipment	
h	Emergency broadcast PA system speaker	
M	AM Impedance Matching	
L	AM Dummy Load	

## NOTE

- The wiring are as follows.
  - AM transmission Induction cable
  - RF coaxial cable
  - Optical cable
- The fixed spacing of AM transmission Induction cables is 3.0 m.
- The installation interval of the emergency speaker inside the tunnel is 50m.
- The installation location of the receiving antenna is determined after field inspection.

Client	Task name	Drawing name	Drafter : System WRF-402(World RF Co.,Ltd)		Checker	Date	Scale	Drawing number
	Tunnel radio rebroadcast system(WRF-402)	Tunnel radio rebroadcast system floor plan-2			Reviewer	2020.	S=NONE	ET-003
					Writer			