

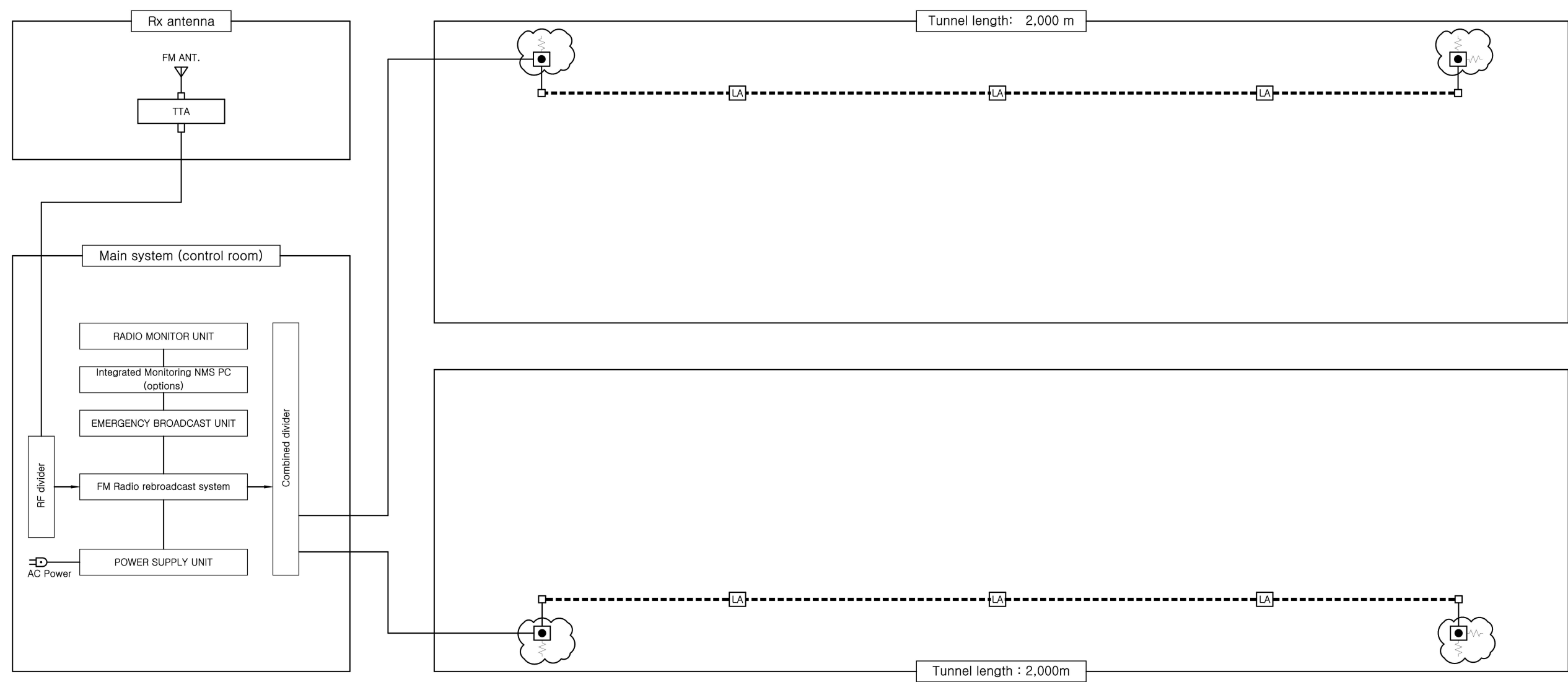
Tunnel radio rebroadcast system design drawing

System type : WRF-202(FM) 2,000m

Drawing list table

Drawing number	Drawing name	Scale (A1)	Scale (A3)
ET-000	Drawing list table	NONE	NONE
ET-001	Tunnel radio rebroadcast system diagram	NONE	NONE
ET-002	Tunnel radio rebroadcast system floor plan	NONE	NONE
ET-003	Tunnel radio rebroadcast main System detail	NONE	NONE
ET-004	Tunnel radio rebroadcast device instillation detail	NONE	NONE

Tunnel radio rebroadcast system diagram



Legend

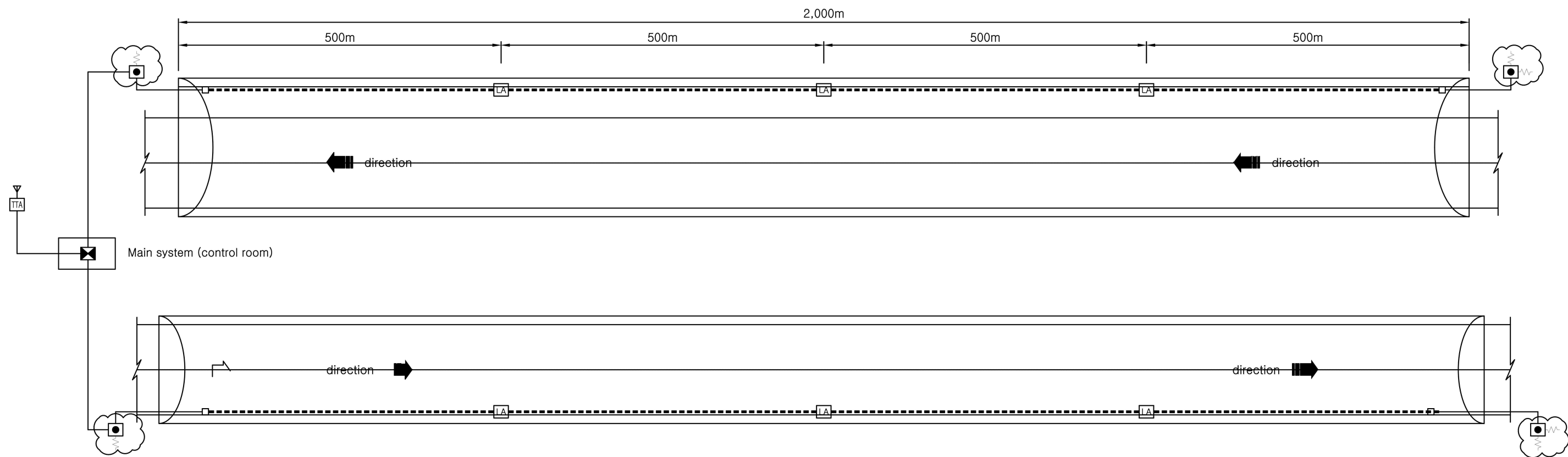
SYMBOL	DESCRIPTION	REMARK
	FM ANT	
	TTA(Low Noise Amplifier)	
	Radio rebroadcast system Main Equipment	
	Fire radio access terminal box	
	FM LINE AMPLIFIER	
	FM dummy load(50Ω)	
	Connector	

NOTE

- The wiring are as follows.
 - Leakage coaxial cable(7/8"~) flame retardant
 - RF coaxial cable
- The fixed installation interval of the leaky coaxial cable is 1.5m.
- The installation location of the receiving antenna is determined after field inspection.

CLIENT	TASK NAME	Drawing name	Drafter : System WRF-202(WorldRF Co.,Ltd)	Checker	Date	Scale	Drawing number
	Tunnel radio rebroadcast system(WRF-202)	Tunnel radio rebroadcast system diagram		Reviewer	2022. 11.	S=NONE	ET-001
				Writer			

Tunnel radio rebroadcast system floor plan



Legend

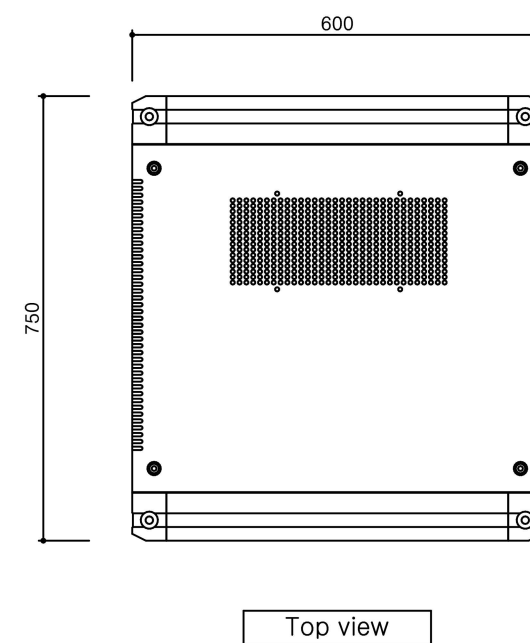
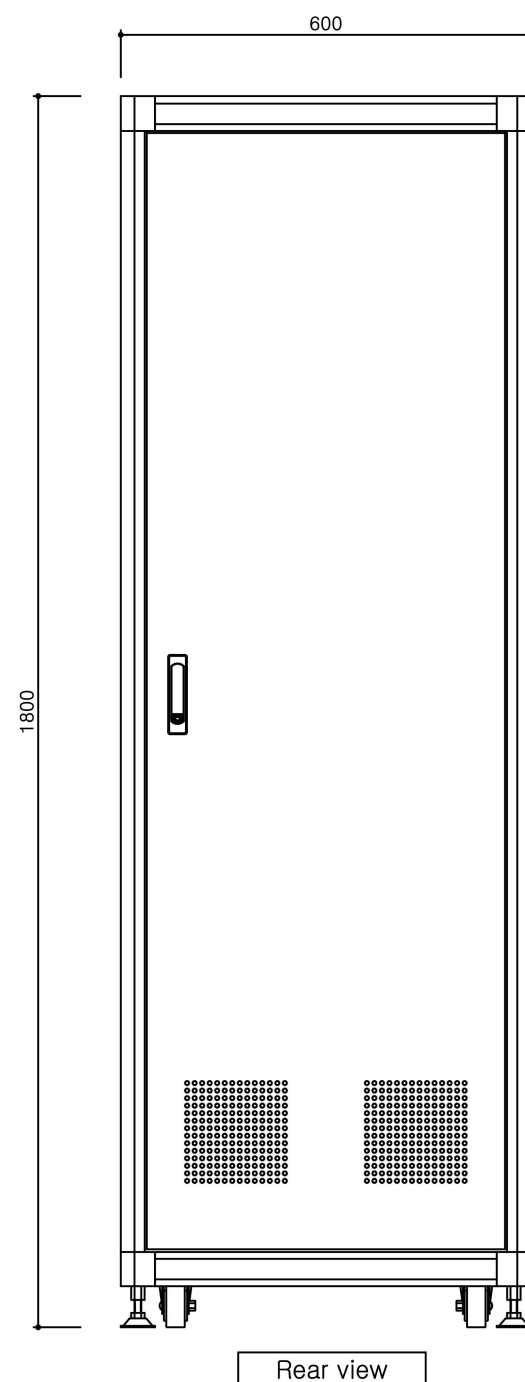
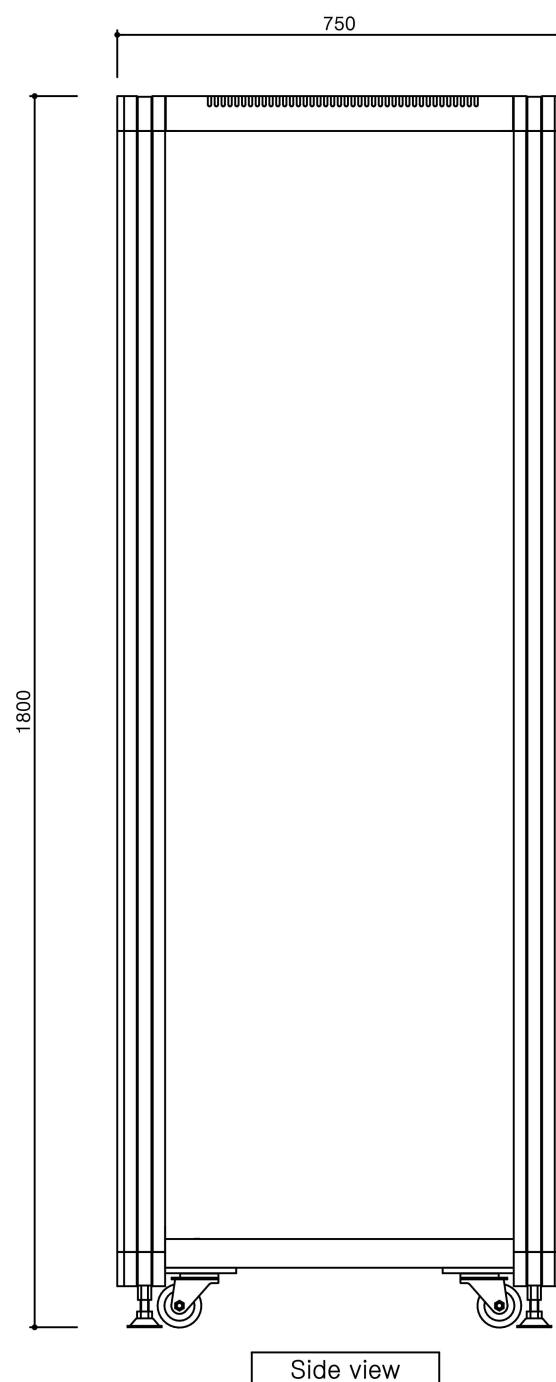
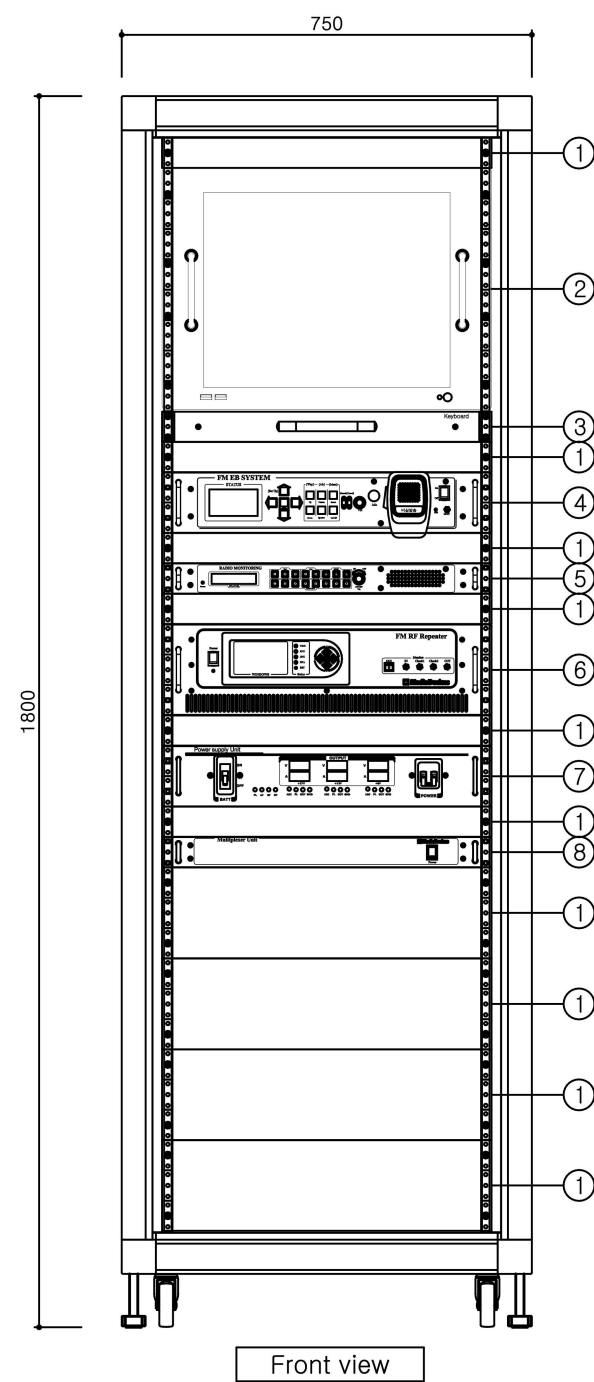
SYMBOL	DESCRIPTION	REMARK
	FM ANT	
	TTA(Low Noise Amplifier)	
	Radio rebroadcast system Main Equipment	
	Fire radio access terminal box	
	FM LINE AMPLIFIER	
	FM dummy load(50Ω)	
	Connector	

NOTE

- The wiring are as follows.
 - Leakage coaxial cable(7/8"~) flame retardant
 - RF coaxial cable
- The fixed installation interval of the leaky coaxial cable is 1.5m.
- The installation location of the receiving antenna is determined after field inspection.

CLIENT	TASK NAME	Drawing name	Drafter : System WRF-202(WorldRF Co.,Ltd)	Checker		Date	Scale	Drawing number
	Tunnel radio rebroadcast system(WRF-202)	Tunnel radio rebroadcast system floor plan		Reviewer		2022. 11.	S=NONE	ET-002
				Writer				

Tunnel radio rebroadcast Main system Detail



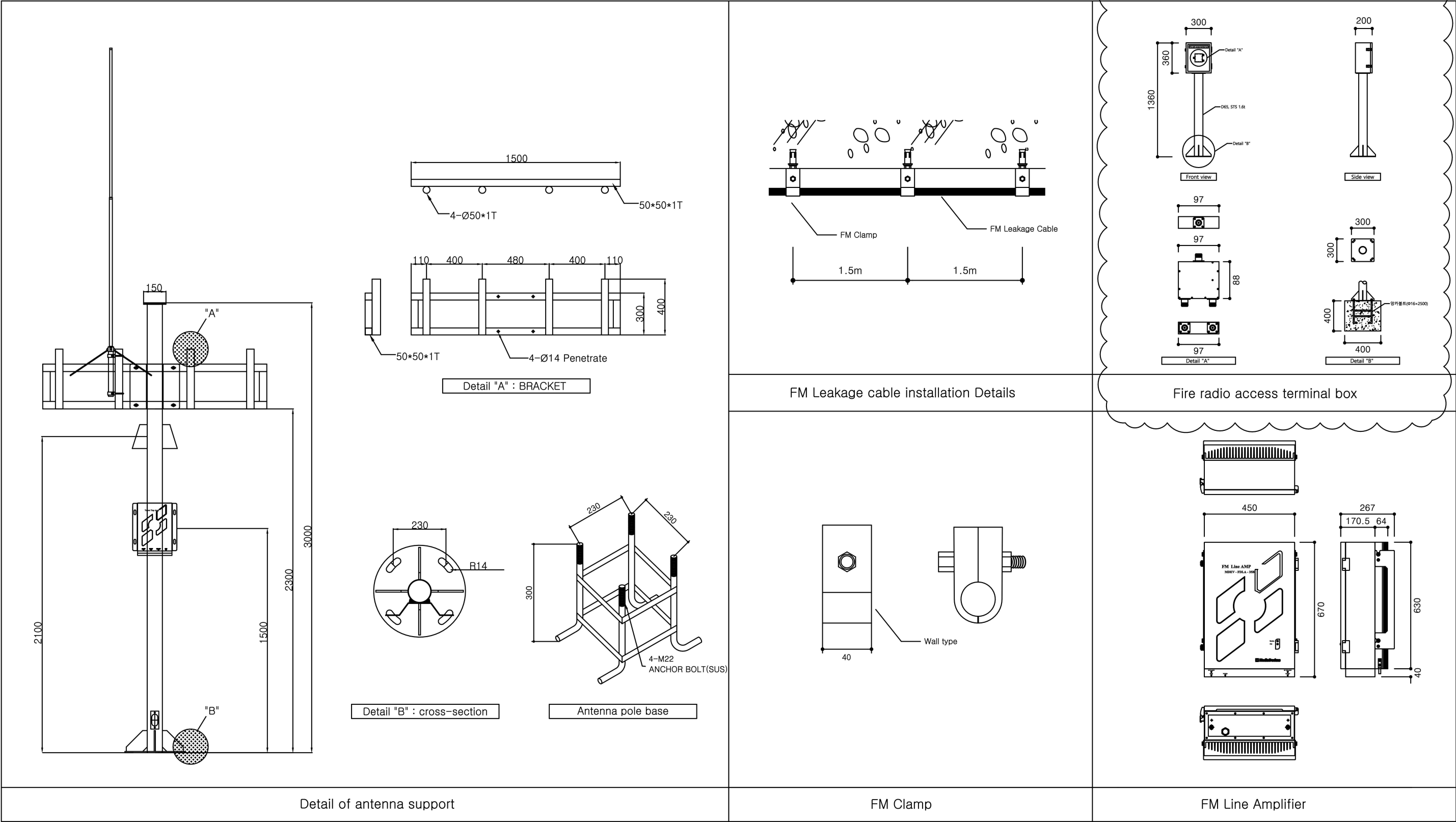
ITEM	DESCRIPTION
1	BLANK
2	Integrated Monitoring NMS PC (options)
3	Keyboard (options)
4	FM emergency broadcast Unit
5	Radio monitor unit
6	FM Radio rebroadcast system
7	Power supply unit
8	RF Divider

Main system Rack detail

CLIENT	TASK NAME Tunnel radio rebroadcast system(WRF-202)	Drawing name Tunnel radio rebroadcast Main system Detail	Drafter : System WRF-202(WorldRF Co.,Ltd)	Checker		Date 2022. 11.	Scale S=NONE	Drawing number ET-003
				Reviewer				
				Writer				

Tunnel radio rebroadcast device installation detail

Fire radio access terminal box
(Options can be changed (Korean standard 450MHZ))



CLIENT	TASK NAME Tunnel radio rebroadcast system(WRF-202)	Drawing name Tunnel radio rebroadcast device installation detail	Drafter : System WRF-202(WorldRF Co.,Ltd)	Checker		Date 2022. 11.	Scale S=NONE	Drawing number ET-004
				Reviewer				
				Writer				